

Putting Your Sights on Stoma Site Marking!

Diane Bryant, MS, RN, CWOCN, Nursing, Brigham & Women's Hospital
Jacqueline Massaro, MSN, RN, ACNS-BC, CWOCN, Nursing, Brigham & Women's Hospital, Boston, MA.

Background

Preoperative stoma site marking is performed inconsistently, or not at all, for patients undergoing planned fecal and urinary diversions. Clinicians who are involved in stoma site marking could improve preoperative stoma site selection by referring to the principles of stoma site selection published in the literature and/or the collaborate position statement.

Purpose

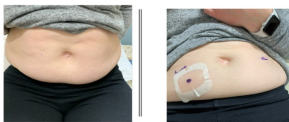
Raise awareness of the recently published guideline published by Wound, Ostomy Continence Nurses Society, American Urological Society and American Society of Colon and Rectal Surgeons.

Method Guidelines applied by two WOC nurses in selecting stoma sites for three individuals who were scheduled for fecal and urinary diversions practicing in an urban, academic, tertiary facility.

Three Case Studies Utilizing WOCN Society, AUA and ASCRS Statement on Preoperative Stoma Site Marking



Stoma Site for a Potential Ileostomy



Post op Visit 5-5-2022



Conclusions: Consistent use of the position statement to guide preoperative stoma site selection for fecal and urinary diversions will improve stoma location and therefore decrease stomal and peristomal complications

Implications for Practice: Referring to the principles of stoma site selection consistently will improve stoma site location

References

References:
Goldberg, M.T. & Mahoney, M. F. (2021, p. 143-161). Preoperative preparation of patients undergoing a fecal or urinary diversion. In WOCN Core Curriculum: Ostomy Management, 2nd Ed. Wolters Kluwers.
Hsu, Mei-Yu; Lin, Jui-Ping; Hsu, Hsiao-Hui; Lai, Hsing-Ling; Wu, Yu-Lin. (2020). Preoperative stoma site marking decreases stoma and peristomal complications: A meta-analysis. Journal of Wound Ostomy and Continence Nursing. 47(3), p. 249-256.
https://cdn.ymaws.com/member.wocn.org/resource/resmgr/document_library/WOCN_Stoma_Marking_Procedure.pdf (accessed on 11/19/2021)
https://cdn.ymaws.com/member.wocn.org/resource/resmgr/WOCN_Stoma_Positioning_State.pdf (accessed on 11/19/2021)

**Key Points : Examine in Sitting , Standing and Bending
Avoid Creases and Folds
Identify Landmarks
Confirm and Darkly Mark Best Options, Protect Marks
Consider marking areas to avoid
Photo Documentation**